



SABUJ SANGHA

39 year of service to the nation



2013-14

ANNUAL REPORT



OUR SUPPORTERS



“

Sabuj Sangha means strengthening communities

”



CONTENTS

Note from the
Director

01

Note from the
President

02

About Sabuj
Sangha

03

Health and
Nutrition

07



Water,
Sanitation and
Hygiene

10

Education
and Protection

13

Livelihood
and Women's
Empowerment

17

Environment
and Disaster
Risk Reduction

21

Volunteer
Support

24



Visitor
Speak

26

Financials

27

On the
Anvil

29



NOTE FROM THE DIRECTOR

“

Ultimately, convergence of resources and actions is the foundation of development.

”

2013-14 saw Sabuj Sangha complete 39 years of service to disadvantaged communities in remote and underserved areas in West Bengal, India. The year was marked by continuation of long standing collaborations as well as new partnerships. We acknowledge the support of all the partners including government agencies/departments from the national to the local levels, corporates and other civil society actors in our journey towards ecologically sensitive and sustainable development.

Sabuj Sangha's experiences have also reaffirmed that vibrant institutions can play a key role in mobilising communities and spurring participatory processes. These institutions and the community members driving them can become catalysts of change. In fact, institution building has now emerged as a key area of work focusing on federation of women's Self Help Groups, farmer's clubs and other community based committees for education and protection.

Aligned to our focus on disadvantaged population sub groups, our work with women, children and the elderly has also grown. However, maternal and infant morbidities and mortality and childhood malnutrition continue to pose a grave threat in some of the areas we

work. There has been considerable progress and the linkages with government schemes and provisioning is making a crucial difference. But we still have some distance to cover together. The initiatives on education and reducing child labour have also been promising. Sabuj Sangha intends to focus on unsafe migration and child trafficking from the vulnerable areas like Sunderbans and the tea gardens of Jalpaiguri in the coming years. Social security, particularly for the elderly, is an urgent need as well and we would like to learn and contribute more. Sabuj Sangha has also sought to consistently build in environmental considerations in all its programming. This is essential since the areas we work in remain susceptible to disasters and climate change impacts. The organisation is now gradually moving towards a deeper understanding of disaster risk reduction measures and integrating the same across sectoral initiatives.

We hope to continue working together towards a brighter and a more hopeful future! Ultimately, convergence of resources and actions is the foundation of development.

Ansuman Das
Mob.: 9831001655
director@sabujsangha.org



NOTE FROM THE PRESIDENT

Greetings to all friends and well wishers of Sabuj Sangha!

Sabuj Sangha began with the vision of working to improve the quality of life of vulnerable people in West Bengal and continues to move closer to its goals with each passing year. I would like to begin by emphasizing the role of Ansuman Das, Director who is the main person steering the course of the organization's journey towards sustainable development. We, the other members of the team, continue to support him as facilitators in his dedicated efforts, inspiring him to reach the goal.

As a teacher of Ansuman, I am proud to say that he is a non-stop worker inspired by his thoughts, his dreams, brave personality and a sense of duty. He has been successful in directing the Sabuj Sangha team to achieve the ultimate motto of sustainable development through community participation. All project activities in each of the thematic areas have been conducted systematically, involving a wide range of stakeholders at the local, national and global level to deliver high quality of services to the community. We have honestly tried to benefit them to the fullest extent, thus uplifting their quality of life.

Again I give thanks to our dedicated staff, beneficiaries, local people, and all stakeholder groups for their heartfelt cooperation and varied support which has made our work and achievements possible!

I am glad that the last year has seen more progress for the thematic area of Education. We have successfully established the Sabuj Primary Teacher Training Institute and are ready to launch the Sabuj B. Ed. College soon. Both have been recognized by the National Council for Teacher Education and will be affiliated to Calcutta University and West Bengal Board of Primary Education. The Kishalaya Shishu Shiksha Niketan (KSSN), our model school has also been affiliated by the West Bengal School Education Department. We are trying to arrange for up-gradation of the school to include classes IX and X from the next session.

Each step takes us further on the road to positive change in the community. I look forward to your gracious support in helping Sabuj Sangha along its journey towards 'the good of all'.

– Sibasankar Giri

“

Each step takes us further on the road to positive change in the community.

”



ABOUT SABUJ SANGHA

Sabuj Sangha is a non-profit, non-government organisation (NGO) committed to improving the lives of the poor and deprived through participatory and empowerment processes in the state of West Bengal in India. The Gandhian principle of *Sarvodaya* or the upliftment of vulnerable and excluded groups in society resonates in the organisational vision.

The NGO traces its roots to a social club initiated in 1954 in the village of Nandakumarpur in the South 24 Parganas district of West Bengal. It soon became involved in local efforts to enhance wellbeing of the communities caught between the vagaries of nature and shifting tides in the Sunderbans delta and the significant developmental deficits in the region. By 1975, the club had evolved into an organisation with registration under The West Bengal Societies Act, 1961. In 1992, the organisation was registered under The Foreign Contribution Regulations Act 1992. In fact, the 1990s and the turn of the century brought new momentum as Sabuj Sangha placed participatory processes and an intrinsic emphasis on sustainability at the heart of all of its initiatives. The organisation's learning and growth curve enabled an integrated approach to development translated into practice at South 24 Parganas, North 24 Parganas, Kolkata and Jalpaiguri districts of West Bengal. A network of partners including departments/agencies within Government of West Bengal (India), national and international organisations as well as likeminded individuals have been fellow travellers and contributors on this momentous journey.

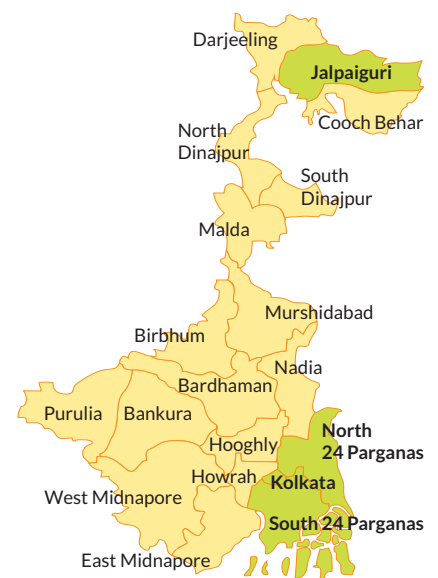
What We Do

- ❖ Health and Nutrition
- ❖ Water and Sanitation
- ❖ Education and Protection
- ❖ Livelihood and Women's Empowerment
- ❖ Environment and Disaster Risk Reduction

(Sectoral initiatives are interlinked within a broader integrated and sustainable development approach)

At the Helm: Governing Body

The Governing Body provides strategic direction to Sabuj Sangha and ensures adherence to values. It tracks quality of services, compliance with laws and regulations and management of resources. It also approves budgets and financial statements.



Our Vision

To secure a society where all people enjoy equal rights and access to equal opportunities.

Our Mission

Sustainable development of marginalised and vulnerable people to improve quality of life through empowerment, education, information, infrastructure development, health care provision and economic self-reliance through convergence of services provided by local self governments.

Our Values

- ✓ Equality
- ✓ Respect
- ✓ Service Beyond Self
- ✓ Transparency
- ✓ Accountability

Governing Body (as of March 31, 2014)

Position	Name	Occupation	Gender	Age (Years)	Meetings Attended
President	Mr. Sibasankar Giri	Retired Teacher	Male	67	04
Vice-President	Mr. Amitava Jana	Retired Teacher	Male	74	01
Secretary	Mr. Ansuman Das	Social Worker	Male	48	04
Asst. Secretary	Ms. Alok Rani Bhunia	Social Worker	Female	51	04
Treasurer	Mr. Bhabesh Chandra Mondal	Retired Teacher	Male	69	04
Member	Mr. Anandamohan Das	Businessman	Male	48	04
Member	Ms. Kananbala Bera	Social Worker	Female	40	04
Member	Ms. Debi Rani Jana	Social Worker	Female	50	04
Member	Dr. S.P. Sinha Roy	Retired Government Official	Male	64	01

Board Meetings

The Governing Body met four times in 2013-14. Minutes of the meetings were documented and circulated.

Date	No. of Members Present	Agenda
06.04.2013	09	Resolutions from last meeting Strategic Planning Related Budget for 2013-2014 Update of ICZMP Update of MMU in Pathar Pratima Miscellaneous
15.07.2013	07	Resolutions from last meeting Upcoming and new projects Update of SHELTER Project Update of Swarnalata Sabuj Seva Sadan Progress of WASH project over all Residential and non-residential schools update NABARD Application Related Ward Nursing Training Programme Miscellaneous
01.10.2013	07	Resolutions from last meeting CHILDLINE Project Related Projects completing in December 2013 Tech Mahindra Application Related Cognizant Foundation Application Related HIF Visit Related Solar Medicus Project related Government health scheme related New projects in education and health Update of EdelGive Foundation Project Miscellaneous
16.01.2014	07	Resolutions from last meeting Updates of ICZMP Updates of Government projects like Community Delivery Centre, Ayushmati, MMU Update of Swarnalata Sabuj Seva Sadan MP LAD Application Related New Bank Account opening Running of schools Kishalaya Shishu Shiksha Niketan and National Child Labour Project Miscellaneous

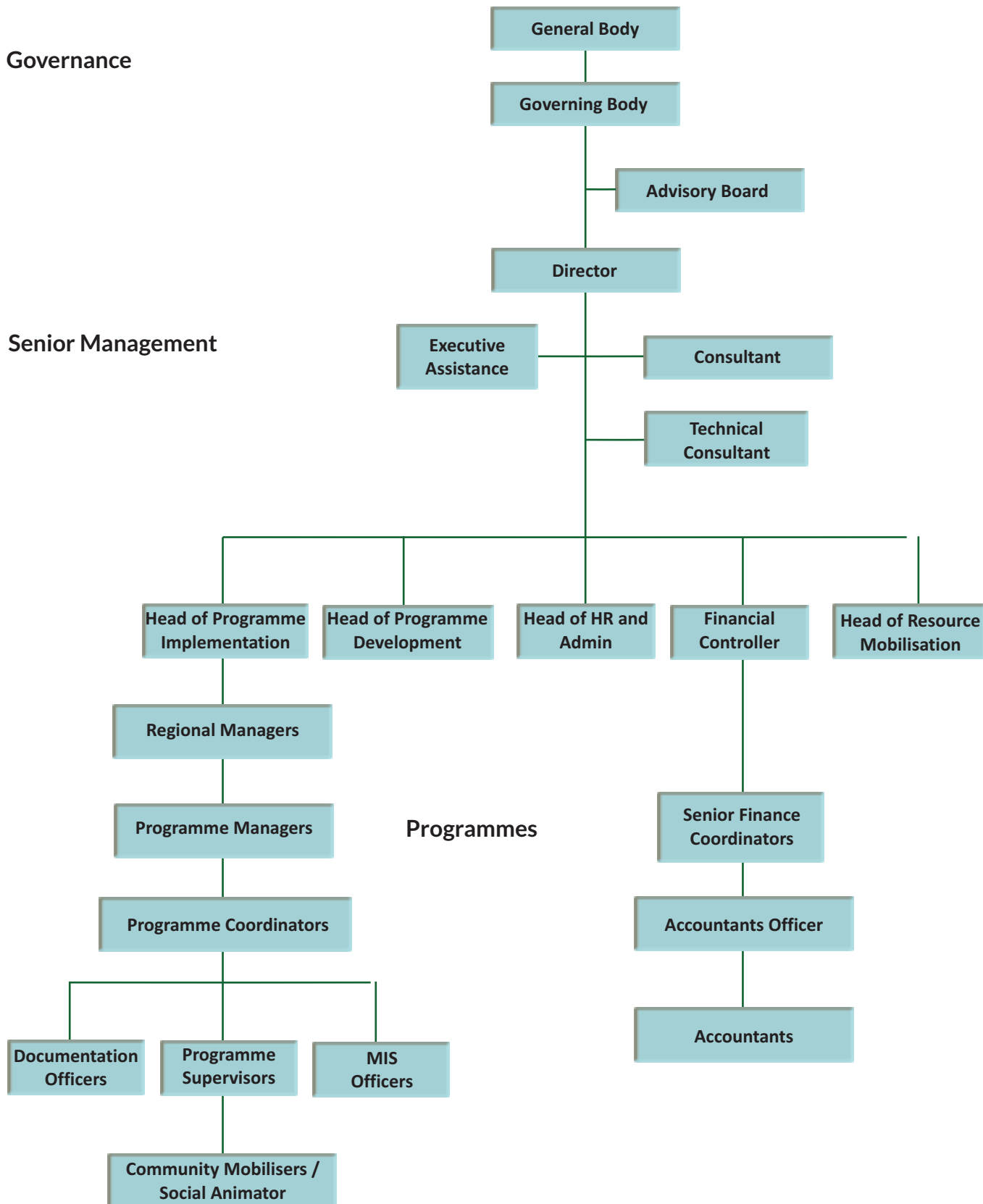
Annual General Meetings

Date	Agenda
27.10.13	Resolutions from last meeting Presentation and Approval of Annual Report 2012-2013 Presentation and Approval of Audit Report 2012-2013 Appointment of Statutory Auditor for the FY 2013-2014 Miscellaneous
23.03.2014	Resolutions from last meeting Constitution of Governing Body for the year 2013-2014 Presentation and Approval of Activities Plan for 2013-2014 Miscellaneous

Disclosures

Total remuneration for Mr. Ansuman Das (Director):Rs 300,000.00
Total remuneration for Mr. Shibsankar Giri (President):Rs 60,000.00
No other Governing Body member received remuneration, sitting fees or any other form of compensation.
No travel reimbursement was made to any member of the Governing Body to attend board meetings or any other office meetings in the year 2013-14

ORGANISATIONAL STRUCTURE



Staff Details

The Senior Management Team is responsible for overseeing daily activities of the organisation and guiding middle and field level personnel and volunteers.

Details of Senior Management Team as of March 31,2014

Mr. Ansuman Das	Director
Mr. Manas Chakraborty	Programme Manager
Mr. Sajalendu Deb	Senior Finance Coordinator
Mr. Soumitra Jana	Account Officer
Mr. Arunabha Das	Head of Resource Mobilisation & External Relations
Ms. Soma Maity	Regional Manager
Mr. Asok Bhattacharya	Regional Manager
Ms. Debdatta Purakastha	Executive Assistant

Remuneration of Director	: Rs. 3,00,000 per annum
Remuneration of President	: Rs. 60,000 per annum
Remuneration of highest paid full time regular staff	: Rs. 4,32,000 per annum
Remuneration of lowest paid full time regular staff	: Rs. 12,000 per annum

Travel

Total Cost of International Travel in the FY 2013-2014	: NIL
Total Cost of National Travel in the FY 2013-2014	: Rs. 98,056.00

Gross Salary per Month (in Rs)	Male	Female	Total
Less than 5000	54	57	111
5001-10000	23	3	26
10001-25000	15	2	17
25001-50000	3	0	3
50001-100000	0	0	0
Greater than 100000	0	0	0
Total	95	62	157





HEALTH AND NUTRITION

Sabuj Sangha focuses on ensuring equitable access of deprived rural and urban populations to quality health and nutrition services. The health and nutrition actions aim at enhancing well being of particularly vulnerable groups (women, children and elderly) from the rights based perspective. It is also intrinsically linked to an understanding of ill health and malnutrition affecting individual and community capacities and perpetuating poverty and deprivation across generations. Thus, the interconnections between this thematic and Water, Sanitation and Hygiene (WASH), improved health status facilitating educational progress of children as well as the mutually enforcing relationship with livelihoods finds due emphasis.

The **priority themes** are:

- Reducing maternal and childhood morbidities and mortality
- Developing a pool of local resources for sustainable change for maternal and child health (MCH) outcomes
- Providing range of MCH and general healthcare services in hard to reach/underserved areas through institutional facilities and mobile medical units
- Growing emphasis on optometric, orthopaedic, dental and geriatric care services for elderly

Sites

Select areas in Mathurapur I and II, Pathar Pratima, Canning I and II and Baruipur blocks in **South 24 Parganas**, Bidhannagar in **North 24 Parganas** and **Kolkata**

Programmes and Partners

MCH Initiatives including Community Delivery centre & Ayushmati Scheme for Safe Motherhood and Promoting Institutional Delivery

- NRHM
- Department of Health and Family Welfare, Govt. of West Bengal (GoWB)
- Give India
- Garden Reach Shipbuilders and Engineers Ltd. (GRSE)

Mobile medical unit

- Department of Health and Family Welfare, GoWB
- Smile Foundation

Other facilities at RHTC

- GiveIndia
- Solar Medicus : Hanseatic Asian Forum
- Eye care : Bengal Medical Association, Indian Oil Limited

Ward Nursing Training Programme at RHTC

- AID, Eindhoven
- ASML Foundation

Smile on Wheels outreach services

- Smile Foundation

Key Strategies

Community Mobilisation and Behaviour Change Communication at household and community levels to create awareness, promote positive health seeking behaviours and access to services particularly for women and children

Direct Service Delivery through quality institutional facilities and mobile medical services affiliated to government schemes (Ayushmani, Community Delivery Centres, Rashtriya Swasthya Bima Yojana or RSBY) and otherwise

Outreach, Linkage and Referrals to facilitate access to Government services and other provisions primarily under the National Rural Health Mission (NRHM), RSBY and private service providers as needed

Case Management to identify, provide supportive inputs regarding home based management of malnutrition and track progress of pregnant women as they transition into motherhood with follow up of their children's nutritional and development status

Capacity Building of community health promoters (*Swasthya Sevikas*) in MCH and nutrition and provision of ward nursing training to meet local professional availability shortfalls

Snapshots

Providing Comprehensive Health Care Services

Rural Health and Training Centre (RHTC), also known as **Swarnalata Sabuj Seva Sadan**, remains the nerve centre of Sabuj Sangha's healthcare service delivery operations. It is a 20 bedded multi-facility. Its location, close to the river Mridangabhanga in Nandakumarpur, facilitates access for the communities living across the scattered islands in the Pathar Pratima block of South 24 Parganas.



RHTC provides both indoor and outdoor OPD services, diagnostic facilities (pathological tests, X-ray, ultrasound and ECG) and operation theatre services for various surgeries. Antenatal care, institutional delivery and postnatal care checkups for women remain a key operational focus. General health services covered in the OPD include eye care, orthopedic and dental care. Two extension units in Herambagopalpur and Achintyanagar provide a closer connection to local communities and offer limited facilities. Moreover, the linkages with government

schemes for the RHTC and two units represent a commitment to converging resources for strengthening public service delivery.

RHTC has recently acquired solar refrigerators that will facilitate storage of blood, thereby reducing need to travel for its procurement. Mobile lamps which do not cast shadows and aid in performing minor surgeries have also been obtained. These equipments, received under the Solar Medicus component, will help provide cost effective and timely treatment in the resource poor context of the Sunderbans.

Mobile Health: A Boat and a Bus

To meet the health care needs of people in remote areas in the Sunderbans, Sabuj Sangha runs an equipped medical boat (**mobile medical unit**) which covers 12 *gram panchayats* (GPs) in Pathar Pratima block in South 24 Parganas. Weekly mobile camps are also organised in and around jetties on fixed days. Doctors and technicians provide reproductive and child health, general diagnostic and radiology services along with some basic medicines.

Smile on Wheels is the organisation's urban mobile unit which reaches out to 1,50,000 slum dwellers under Kolkata Municipal Corporation and Bidhannagar Municipality. Besides providing direct services, there is also an emphasis on



Footprint

- More than 1, 50,000 people reached through RHTC and outreach services
- 391 institutional deliveries conducted (including 143 under the Ayushmani scheme)
- 14 RSBY card holders provided free health services;
- 1202 new eye care cases treated at the OPD, 886 cases followed up from previous years with 148 patients provided with spectacles
- RHTC caseload included 6105 Out Patient Department cases; 499 In Patient Department cases; 296 x-rays, 1092 diagnostic tests and 744 USGs done
- 20 women completed the one year Ward Nursing Training at RHTC
- 24 *Swasthya Sevikas* trained on maternal and child health including linkage and referrals to government services
- 95 health camps conducted wherein 1,383 men, 987 women and 185 children received services



community engagement with the support of youth clubs, *Basti Unnayan Samitis*, councilors in the urban local bodies and other key community influencers. While community members pay nominal patient charges, other options such as local and corporate sponsorship, public and online fundraising are utilised.



MAKING A DIFFERENCE

Ensuring Institutional Delivery

Sabuj Sangha's health workers (known as *Swasthya Sevikas*) have been playing a key role in convincing families about the importance of antenatal care checkups for pregnant women and institutional delivery which also ensure access to financial benefits under government's maternity scheme i.e. Janani Suraksha



Yojana. The messages, reiterated through home visits, mothers' meetings and other interactions convinced Rakhi Paik, resident of Herambagopalpur in Pathar Pratima in South 24 Parganas. Her family was also impressed with the services and support received at the Community Delivery Centre in Herambagopalpur. "On experiencing labour pains, I called the *Didi* at the Centre and they came and took me," she shares. The family also preferred CDC because reaching the government hospital would have taken at least two and a half hours because of the remote

location of their village. Meanwhile, Baisakhi Naiya's mother in law could call upon the local *Swasthya Sevika* to help out when her daughter had to be taken to the RHTC for delivery. "It was late and they stay far away. But even then *Didi* came with her husband and took us in a van rickshaw to the Seva Sadan. The baby was born at 2 am," she recalls. "I have to say my daughter in law was well taken care of in the three days that she was there. Since that night more beds were available, three of us stayed back. The staff there took very good care of Baishakhi and we brought mother and child home safely," she adds.

Experiencing Positive Change

"Delivery at home has many risks," affirms Durgarani Maiti from Purba Chintamonipur in Pathar Pratima in South 24 Parganas. Following common practice, she had come to her maternal home for the birth of her child. Her parents took her to RHTC for an institutional delivery. "The good treatment I received there encouraged my in-laws to ensure that my second and third child were also born there," she shares.

"This hospital (Swarnalata Sabuj Seva Sadan) is of great help to the villagers. The nearest hospital with similar facilities is in Raidighi, which takes 30 minutes to reach on a cycle van... and the Diamond Harbour Sub-divisional Hospital is almost three hours from here," said Saswati Sashmal, in her late 60s. Her younger sister has undergone an operation for removal of appendix at the Sadan.

One Hurdle Over, Another Remains

Octogenarian Bhupendra Maity, a farmer living in a remote village in South 24 Parganas, has been suffering from eye problems for the last 20 years. He first stepped into RHTC in 2007. The hospital health scheme allows him access to OPD services and medicines at subsidised rates. He also received a pair of spectacles. Maity acknowledges the beneficial inputs and has even encouraged his family members to avail services at the RHTC. His daughter gave birth to her child here. However, lately, his eye condition has worsened. He was diagnosed with glaucoma. Unfortunately, surgery is not possible at RHTC as it lacks a suitably equipped operation theatre. He cannot afford the expenditure that he would incur at other facilities. He hopes that RHTC will soon have an eye care unit with Operation Theatre and other facilities to support him and other poor and aged people in remote rural areas.



WATER, SANITATION AND HYGIENE

Water, Sanitation and Hygiene is a key thematic for Sabuj Sangha within its integrated approach for sustainable development. The WASH actions are linked to supporting families and communities in improving sanitation and hygienic practices, thereby preventing and reducing illnesses and related out of pocket expenditure. These play a crucial role in reducing other vulnerabilities and risks from the protection perspective, particularly for girls and women, as well. Besides, the interconnections between WASH in schools and continuing girls' education have been established. Further, actions for improved water management also serve another purpose – i.e. promoting climate change adaptation.

Sites

Select areas in Mathurapur I and II, Pathar Pratima, Sagar, Baruipur, Canning I and II and Sonarpur block in **South 24 Parganas**, Kumargram block in **Jalpaiguri**, Biddhannagar in **North 24 Parganas** and **Kolkata**

Programmes and Partners

WASH in Schools - Awareness, Improving infrastructure and Ground water recharging

- Coca Cola
- NDTV
- Water for People
- UN Habitat
- ASTI, USA
- PGWI, USA
- ADFT, USA
- Charity Aid Foundation (CAF)

Community Water and Sanitation Programme

- Embassy of Ireland
- World Bank via Ministry of Environment, Government of India (GoI)
- Water for People
- Ministry of Drinking Water and Sanitation, GoI and GoWB

Nirmal Bharat Abhiyan

- Ministry of Drinking Water and Sanitation, GoI and GoWB
- South 24 Parganas Zilla Parishad

The priority themes are:

- Enhancing WASH infrastructure and resources in schools and communities with sensitivity to needs of girls, women and the differently-abled
- Increasing awareness, and positive practices at schools, households and community and encouraging children to promote the key messages within families and beyond
- Ensuring sustainable change through community ownership and multi-stakeholder linkages and actions on WASH
- Utilising groundwater recharging, rainwater harvesting and other such measures for access and effective use of water and contributing to local ecology

Key Strategies

Infrastructural Support in terms of building sanitation units, water purifying and management systems and other vital resources at school and household levels

Behaviour Change Communication at school and community levels to create awareness and promote positive WASH practices using various outputs and channels (including posters, wall paintings, comics, games etc)

Community Based Monitoring by local agents such as water and sanitation committees (WATSAN) and Jalabandhus (trained youth) promoting collective ownership and better management of water resources

Linkages to effectively leverage resources at school and community levels with government and corporate actors; bringing stakeholders such as relevant government line departments, local self government bodies and other local agents for necessary actions

Snapshots

WASH in Schools: Children as Drivers of Change

Sabuj Sangha's interventions focus on infrastructure development and enhancing knowledge levels of teachers within a larger vision of helping schools grow as safe, healthy and environment friendly spaces for children. Child rights and gender perspectives shape the activities. For instance, there is an emphasis on building sanitation facilities which meet requirements for girls (i.e. separate toilets and bathing/changing facilities and arrangements for disposal of sanitary napkins using incinerators). Setting up rain water recharging facilities, landscaping and greening of open spaces and improving playgrounds are also undertaken.



Moreover, children, as catalysts for change, constitute a key stakeholder group for enhancing understanding of key issues and promoting practices such as safe hand washing, hygiene related to sanitation and menstruation, safe disposal of liquid and solid waste and maintaining an eco-friendly environment. They are encouraged to share what they have learnt with their families and promote positive practices therein.

Towards Open Defecation Free Villages

Lack of adequate sanitation facilities with water and age old practices force communities to continue open defecation. This carries considerable health and protection risks. Sabuj Sangha works with the local rural self-government bodies (Panchayats Raj Institutions, PRIs) to form 'Open Defecation Free' Nirmal Grams in selected areas of South 24 Parganas and Jalpaiguri. The emphasis is on ensuring complete coverage of sanitation facilities within a geographical area as prioritised under the Nirmal Gram Abhiyan/Total Sanitation Campaign.

Key activities include construction of drinking water and sanitary units in households, schools and Anganwadi centres; water resource management



Footprint

- 37000 men and women; 6709 families and about 10,000 children reached with key WASH messages
- 6850 girls and 4570 boys in 16 schools and 1 college accessed quality WASH facilities; 20 drinking water stations, 44 sanitary toilets and 13 hand washing stations constructed
- Facility improvements in communities: 770 household sanitary units and 7 dug wells constructed; 26 tube wells renovated with platforms
- 26 WATSAN committees and 53 Jalabandhus drove community actions on WASH; latter ensured maintenance of local water resources
- More than 200 meetings held with communities to enhance capacities and build momentum for collective action on WASH
- 68 bacteriological water tests conducted



(installation/renovation/testing) and solid and liquid waste management. Additionally, management of water bodies and use of solar energy in households are promoted.

Community Fund Management Programme

A demand driven, participatory and community owned approach lies at the heart of the community WASH interventions. This is exemplified in the community fund management programme involving a revolving fund. The model is rooted in the belief that financial assistance for sanitation facilities in the form of loans fosters more proactive involvement rather than subsidies. Community members repay their loans to Sabuj Sangha in easy monthly installments and the money can then be used for others. Thus, a cycle of continuous support to the community is possible. The support from donor organisations has certainly helped in initiating this fund and ensuring financial flows even as the system gradually matures, to eventually becoming self-sustaining.



MAKING A DIFFERENCE

Transforming a School

Today, 1448 students of Kheadaha High School in Sonarpur in South 24 Parganas, are studying in a child friendly school with adequate WASH facilities. The principal, teachers, students and Sabuj Sangha worked collectively to transform it into a child friendly school with quality WASH infrastructure, improved learning and recreational environment. Altup Sekh, principal of the school, recalls. "Safe drinking water and run down sanitary units were a problem but I couldn't repair them due to financial constraints." Through a mutually agreed plan, sanitation blocks (separate for boys, girls and children with special needs) and drinking water stations were built/renovated. Running water was ensured through installation of pipes, water pump and overhead tanks and renovation of underground water storage tanks. Rainwater harvesting and ground water recharging infrastructure were adopted. More trees were planted. The school bore one third of the total cost. Further, sports equipment such as flying discs, skipping ropes, cricket bats, badminton kit, volleyball kit, etc were also provided.



"It has impacted attitudes and positive practices of my students regarding cleanliness, hygiene and regular attendance. Students have taken ownership of monitoring WASH and other activities in the school through a 'Child Cabinet' as suggested by the Sabuj Sangha team. Each student contributes Re 1 to a fund which is used for maintenance. The incinerator has contributed greatly to menstrual hygiene management for girls who don't miss classes now. Sabuj Sangha's work is praiseworthy," shares Sekh.

Experiencing Positive Change

"The presence of running water has made a huge difference!" declares Uma Sen, principal of Ghutiary Sharif Girls School wherein the infrastructure and awareness components of WASH were undertaken. "Water stations existed but the drinking water was not safe; Toilets were insufficient to meet our demands, without running water, and in poor state," informs Rosenara Khatun, Student, Class VI. Rosenara, moved by the transformation in her school, has also found her calling. She is now determined to be a social worker and work for the betterment of her community.

"The local user group understands the importance of water, its conservation and various other sanitation issues. They strongly believe that they will be able to continue the committee in the future and share the knowledge gained with other people," asserts a confident committee President, Shipra Sengupta of No. 1 Payla Gheri WATSAN Committee in Digambarpur village of Pathar Pratima blocks in South 24 Parganas.



EDUCATION AND PROTECTION

Sabuj Sangha believes that education is a key driver of change which can help communities break out of a cycle of poverty and powerlessness. Moreover, elementary education has been recognised as a fundamental right under the Indian Constitution. Keeping children in school has other significant benefits including adversely impacting possibilities of their engagement in child labour as well as delaying early marriage for girls. In fact, Sabuj Sangha considers education and protection as interrelated spheres that collectively ensure safe childhood and well being. The organisation undertakes programmes that fall within this intersection as well as certain initiatives that are specific to the two themes. Even then, connections with other thematic areas are encouraged wherever possible (i.e. using schools to create awareness on WASH and environment). Meanwhile, Sabuj Sangha's *Child Protection Policy* acts as a key reference for all initiatives involving children. Also, the organisation situates its protection initiatives within a larger focus on supporting vulnerable groups such as children (particularly girls) and the urban poor who have not received sufficient attention.

Programmes in Education

Rehabilitation of Deprived Children through Education

- SUAS Educational Development
- Give India
- Smile Foundation
- Volunteer support

Kishalaya Shishu Shiksha Niketan (Model School)

- Give India
- Volunteer support
- Community

Primary Teachers Training Institute (Recognised by National Council for Teacher Education -NCTE and affiliated to West Bengal) Board of Primary Education

Sabuj B.Ed College (Recognised by NCTE and affiliated to Calcutta University)

Sites

Select areas in Canning I and II, Baruipur, Jamnagar, Mathurpaur II and Pathar Pratima blocks in **South 24 Parganas**, Bidhannagar in **North 24 Parganas** and **Kolkata**

The **priority themes** are:

- Enhancing access and quality of education for rural and urban deprived children
- Promoting awareness and action on child rights including protection issues by children and their communities
- Supporting development of local safety net for vulnerable children involving community members, school authorities and teachers, local self government bodies and other relevant stakeholders
- Providing supportive services to vulnerable children and those who have experienced abuse or other harmful situations
- Supporting processes of empowerment of urban poor which can also help create a protective environment for them and their children

Key Strategies

Direct Services such as centres for promoting mainstreaming and retention in schools, model school and teacher training institute; rescue and facilitating rehabilitation services for children in distress

Capacity Building of children on child rights and other issues through platforms such as Children's Core Groups; of teachers on child centred learning methodologies and of deprived urban community groups on rights and entitlements

Community Mobilisation and Monitoring for greater ownership of the centres with Centre Development Committees, Mothers Core Groups and Child Core Groups as key actors who contribute to child protection measures as well; also of deprived urban community groups for actions linked to their rights and entitlements

Convergence with a range of actors such as government line departments, local self government bodies, police, judiciary, schools, NGOs and others for necessary actions in the best interests of children; also linkages with multisectoral actors for deprived urban groups

Snapshots

Back to Schools

Sabuj Sangha runs 34 centres that help children who have dropped out of schools to equip themselves to return to formal schooling. Coaching support is also provided to children to ensure retention. These centres, known as **Sabuj Kunri**, have been



particularly effective in providing support to first generation learners who do not get the required follow up support needed in their homes. Teachers receive periodic inputs to enable them to facilitate joyful learning methodologies which remain responsive to local needs as well as promote development for each child. These centres have also become the hubs of child protection activities as children's groups (known as Child Core Groups) are anchored here. In fact, children are encouraged to express themselves through social and cultural platforms and also engage in key issues. Centre Development Committees comprising key local community members including parents are formed to help monitor the progress. Mothers' Core Groups and the children's groups also contribute in this key function. The underlying objective is to assist them in gradually taking over the centres in the future as well as promote a more rights based dialogue between communities and local government authorities.

Investing in Institutions

Kishalaya Shishu Siksha Niketan (KSSN) is a co-educational primary school (currently up to class VIII) established by Sabuj Sangha at Nandakumarpur in South 24 Parganas to promote quality education in rural areas. The school has been developed as a model institution which adopts good practices. This includes use of a comprehensive curriculum, smaller teacher-student ratios, modern teaching learning methods which promote joyful learning with emphasis on extracurricular activities as well. The school also acts as a learning and resource centre where teachers from nearby schools visit to gain insights and practice appropriate teaching methodologies. In 2013-2014, 144 students were on the rolls.



Meanwhile, a Primary Teacher Training Institute (PTTI) has also been set up in Nandakumarpur to enhance availability of well-trained teachers in the Sunderbans. This is affiliated to the West Bengal Board of Primary Education and the National Council for Teacher Education. A BEd College is also being planned by the organisation for the region.

Programmes in Protection

CHILDLINE

- CHILDLINE India Foundation supported by Ministry of Women and Child Development, GoI

Residential and non-residential Schools

- Ministry of Labour, GoI, through NCLP
- GiveIndia

Shelter Project for slum and pavement dwellers in selected urban areas

- Indo Global Social Service Society (IGSSS)

Combating Child Labour

Its involvement in the Government of India's National Child Labour Project has provided Sabuj Sangha the opportunity to converge resources for combating this unacceptable violation of child rights. Key activities undertaken include conducting surveys to identify child labourers, withdrawing them from work and enrolling them in special NCLP schools to ultimately mainstreaming them into age appropriate classes in formal schools.



Sabuj Sangha operates three such schools (one residential and two non-residential). During 2013-14, 150 children have been covered in these schools. The organisation has been coordinating with various government departments for educational and other developmental areas including inputs in health, hygiene and nutrition for these children. Awareness programmes for local communities have also been organised to mobilise support for withdrawing children from labour and other child protection issues.

For Children in Distress

CHILDLINE is a national initiative for reaching out to children in distress through a toll free helpline 1098. It is supported by the Ministry of Women and Child Development, Government of India, and remains a critical component within the national Integrated Child Protection Scheme (ICPS). It has been operationalised through the CHILDLINE India Foundation and its network of partner organisations. Sabuj Sangha has been working as a Collaborative Organisation of CHILDLINE in Baruipur and Canning sub-Division of South 24 Parganas since 2003.

The primary objective is to respond to calls and provide immediate services to the affected child/children as needed. This would include rescue from abusive/potentially abusive situations and facilitating arrangements for immediate shelter, food, medical and other needs. Depending on the specific context, further steps are undertaken in collaboration with either the Child Welfare Committee or the Juvenile Justice Board. Post restoration with families, home visits are also undertaken to gauge the reintegration status of the children. Other key activities include community awareness campaigns to popularize 1098 and interactions with various service providers and other key stakeholders for necessary actions. There is also an inherent emphasis on strengthening systems for redressal and reporting of violations and ensuring adherence to mandated standards of child protection.

Protecting and Advocating for Rights of the Homeless

Sabuj Sangha also extends its protection interventions to address the rights of urban poor communities in Kolkata. The SHELTER project focuses on the urban homeless and poor slum and pavement dwellers in Kolkata Municipal areas. It covers 1575 families with a total population of more than 8000. The goal is to build capacities of a set of people (identified as The City Makers; mainly hawkers and makeshift dwellers) to access their rights and entitlements as citizens and facilitate the process of their development. Key components include research, community mobilisation, communication and advocacy, education for children, capacity building and networking. Advocacy efforts include networking with Griha Adhikar Manch (GAM), Kolkata Naba Jagaran Manch (KNJM) and the National Association of Street Vendors of India (NASVI).



During November-December 2013, a rapid assessment study on homeless people was conducted in all the 141 wards under the Kolkata Municipal Corporation. The

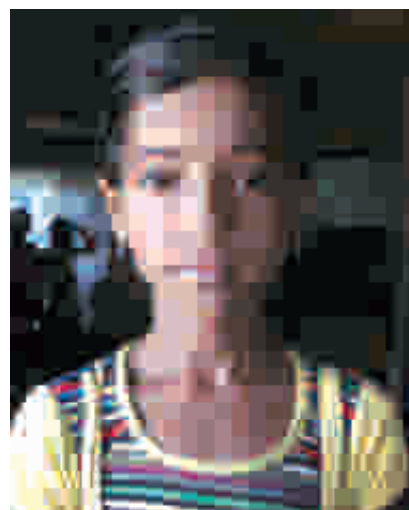


Footprint

- 81.48% of students at the Sabuj Kunri centres mainstreamed within a year (total: 270; mainstreamed: 121 boys and 99 girls)
- 144 students covered at KSSN, 150 children covered through residential and non residential schools for rehabilitating former child labourers
- 1062 students received coaching and counselling support at 34 centres
- 7 Child Core groups (61 members); 9 Centre Development Committees and 7 Mother Core Groups (61 mothers) developed
- 416 children helped through CHILDLINE
- 382 street hawkers and makeshift dwellers oriented on their rights and entitlements; 78 started interacting with government functionaries on their issues; 47 community leaders identified and trained
- Collectives formed for makeshift dwellers (80 members) and street vendors (55 members); the latter registered as Bidhannagar Hawkers' Union (a key milestone)



The primary data was collected through night visits using a simple format. The total number of homeless people found sleeping on the streets during that time stood at 39, 4310 of which 55% could not even manage plastic covers or makeshift homes for themselves. This included 68% men, 19% women and 13% children. The project has also provided scope for developing communication tools such as comics based posters through collaborative workshops.



MAKING A DIFFERENCE

Overcoming Barriers

Ruma Khatun is student of class VI at Piyali Bright Future School in Piyali in South 24 Parganas. Each day in school marks a significant achievement for this girl who



joined in class V after passing an admission test. She had never been to school before! Till 2012, Ruma spent most of her time, unattended by adult family members, at a railway station near her home. Her parents had been struggling to make ends meet with her father's meager income as a seller of unused things. Youngest among three siblings, Ruma was identified by the Ghutiari Sharif Sabuj Kunri centre teachers. Coming to the centre proved to be a turning point for her. It was her first exposure to education and she soon became an eager learner. She secured

admission in Class V in 2013. Ruma has set a career goal for herself. "I hope to become a nurse and serve society," she informs confidently.

Rescuing Tanima

Tanima (*name changed*) went to school as usual on September 6, 2013. Belonging to an affluent business family, she was then studying in class X in a girls' school. But, unlike other days, she did not return home. Her family members searched desperately for her. They contacted the CHILDLINE centre run by Sabuj Sangha on September 12, 2013. Immediately, information about the missing girl was communicated through the due channels to police and others in the CHILDLINE network. Further information about Tanima was also collected. It was learnt that the family had received a call from a stranger informing them that she had been seen in a local train with an unknown person. She was traced to Bongaon and a First Information Report (FIR) was lodged with the local police. Subsequently, another call provided a substantial clue. Kolkata Police tracked the call to a location in Ranchi (Jharkhand). CHILDLINE team and the local police rushed to Ranchi and successfully rescued Tanima in a raid on September 25, 2013. She was brought back and produced before the district Child Welfare Committee (CWC). As per the CWC's instructions, Tanima was placed temporarily in a child care institution while medical tests (including pregnancy, since sexual abuse was suspected) were conducted. After completion of the tests (she tested negative), Tanima was finally united with her family.

Experiencing Positive Change

"My dream is to become a teacher. I will continue my studies and not get married early," says Riya Shil, a student of Sabuj Kunriin Canning I in South 24 Parganas. She is currently studying in Class VI. An active Child Core Group member, Riya played a key role in preventing a child marriage in her community with the help of her group mentor and teacher. Riya's mother had heard about the importance of education at a mothers meeting held by Sabuj Sangha and ensured that her daughter joined the centre. She had convinced her husband, a driver, who harboured reservations about their daughter continuing education.



LIVELIHOOD AND WOMEN'S EMPOWERMENT

Sustainable livelihoods constitute a critical component within Sabuj Sangha's work on poverty alleviation and integrated development of deprived communities. This focus is also closely interlinked with environmental and climate change adaptation measures. Further, the interplay between livelihoods and health, nutrition and food security status is also given due recognition. Gender equity actions are embedded as well. In fact, supporting women Self Help Groups with inputs on livelihoods and other thematics has been a consistent feature over the years. Here, institution building provides further impetus to processes of financial and social empowerment.

The **priority themes** are:

- Enhancing access to on farm livelihood options with measures such as Systematic Rice Intensification (SRI) to enhance productivity and Pond Based Integrated Farming (PBIF) that contribute to both income and food security
- Promoting off farm/alternate livelihood options through small businesses and other opportunities suited to local contexts

Sites

Select areas in Mathurapur I and II, Pathar Pratima, Sagar, Baruipur, Canning I and II blocks in **South 24 Parganas**

Programmes and Partners

Economic Upliftment through Sustainable Livelihood Generation

- EdelGive Foundation
- National Bank for Agricultural Development (NABARD)
- KIVA
- Micro Graam

Livelihood Component in Integrated Coastal Zone Management (ICZM) Project

- World Bank through Ministry of Environment, GoWB

Sundarbans Women's SHG Cooperative Society

- Included in other projects
- Sunderbans Women's Development Society
- Community women

Social Security Programme

- Sabuj Sangha's own initiative
- Individual donors

- Promoting financial inclusion through linkages with institutions for income generation as well as protection from risks of natural disasters, illness etc
- Supporting women Self Help Groups in accessing credit, undertaking income generating (including entrepreneurial) actions and growing as sustainable institutions
- Encouraging women Self Help Groups to grow as catalysts of change and participate in local governance processes

Key Strategies

Capacity Building through inputs on technical knowledge and skill development related to livelihood options encompassing better farming techniques (mainly SRI and PBIF) poultry and goat rearing, growing betel vine, small businesses and making handicrafts

Institution Building focusing on women SHGs as individual units and as federations and farmers clubs for leveraging strengths and sustainability

Convergence with Block Agriculture Development Officers (ADO) and other government line departments as relevant, PRI members, SHGs, Farmer Clubs and others

Snapshots

Sustainable Livelihood Component in Integrated Coastal Zone Management (ICZM) Project

Sabuj Sangha is one of the key stakeholders in the ICZM project which combines addressing environmental issues with an emphasis on improving the livelihood, food security and income generating capacities of coastal residents, many of whom live in deprivation and poverty. The organisation's work is concentrated in Dhaspara Sumatinagar GP in Sagar in South 24 Parganas which remains highly vulnerable (*more information provided in the next section*). A baseline survey has been conducted in the area and 2669 extremely poor households have been identified for coverage.



The project also supports formation and capacity building of 150 SHG/groups under government's Swarnajayanti Gram Swarozgar Yojana (SGSY) with emphasis on inclusion of families living below the poverty line (BPL). Sabuj Sangha works with SHGs from the village to GP levels to build capacities for entry point activities and further entrepreneurship. The SHGs also act as key platforms for knowledge sharing and mutual support and have also been entrusted with the task of social mobilisation on rights, entitlements (including mandated services such as those

linked to health and nutrition, sanitation) and welfare schemes. Key components of the project include providing access to loans and finance for livelihood enhancement and small business enterprises for income generation. Families are being mobilised to start businesses in poultry, fishery and betel vines after being provided necessary training.

Economic Upliftment through Livelihood Security and Women's Empowerment



Women SHGs are supported through a range of capacity building measures including trainings and handholding. They are trained on PBIF which involves controlled and improved farming practices on the banks of ponds providing diverse sources of food and income through fish, poultry, vegetable kitchen gardens and/or paddy. SRI (scientific and improved cultivation method which yields a better crop), organic farming and vermi-composting are also promoted.



Footprint

- 50 families involved in PBIF, 502 farmers began using SRI, 6 families started small businesses, 24 in poultry rearing
- Income generation: 86% of the 502 SRI participants had at least 50% increase in yield leading to higher incomes and savings
- Enhanced nutrition and food security: 98% of families engaged in PBIF and SRI had access to organic food and other items such as fish and eggs
- Around 250 women secured employment and economically benefitted from practising SRI and PBIF leading to enhanced nutrition for their families
- 150 SHGs (76 SGSY and 74 SHGs) identified, mobilised and graded according to performance against set indicators; received inputs on social security schemes
- 10 new groups formed to include members from the extremely poor households in the development process



Additionally, poultry and goat-rearing, small businesses linked to handicrafts, running tea shops etc are also supported depending on contextual considerations. Farmers' Clubs are formed and trained to develop financial and marketing linkages, organic farming and seed banks. Sabuj Sangha has developed *training manuals on SRI, PBIF, Vermi-composting and Organic farming* which have proved particularly helpful in the capacity building exercises. Disaster preparedness, recognising and responding to climate change and other risk reduction measures are also encouraged with PRIs and SHGs seen as the key communicators.

Institution By and For Women

Sabuj Sangha has consistently worked with women to help them utilise the potential of collective action in pushing their issues. This is exemplified in the SHG movement which is a vibrant and dynamic force for economic development and social change in Sabuj Sangha's operational areas in South 24 Parganas. Interventions in community development have been executed through the SHGs since 1993. Apart from fostering self reliance among women, it has led to increase in personal savings, availability of loans for personal as well as business use, and in general, a higher social status for women who now participate in governance processes.

In 2012, women SHGs formed the **Sunderbans Women's Development Society**. In 2013-2014, this assumed a more concrete shape as a union of four federations formed at the GP level. In all, 264 groups with 3,432 members became involved. It facilitates access to micro credit and finance which is channelised via Sabuj Sangha. The process of repayment also follows the same pathway. Key areas of support include development of the collective through capacity building, access to credit, livelihood enhancement measures, linkages with government schemes and access to credit. In 2013-2014, members accessed loans of Rs 22,59,000. Processes are underway to register it as an SHG Cooperative Society.

Footprint

- 246 SHG leaders trained on SHG management, guiding principles, book keeping and accounts
- Business plans developed for 74 groups under ICZM; contract completed for 52 small business proposals
- Entry point activities: 2 tubewells installed, work on another 4 tubewells and 6 roads to be completed soon, 1 pay and use toilet constructed with SHG managing it



MAKING A DIFFERENCE

A Success Story

Thirty three year old Dinesh Jana has been practicing the SRI method of paddy cultivation for the last four years. Secretary of the Jankalyan Farmers' Club, Dinesh lives with his parents, wife and two daughters in Nandakumarpur in South 24 Parganas. "I am grateful to Sabuj Sangha for training me in SRI which has helped me to increase my productivity in paddy cultivation," accepts Dinesh. Earlier, even using large quantities of fertilizers didn't yield a good crop. But now, SRI and limited use of fertilizers have increased the yield substantially. Sabuj Sangha helped Dinesh with procurement of worms for vermi-composting.

Experiencing Positive Change

"My dream is to be successful enough to support my children's higher education and enable them to enjoy a better standard of living," shares Rina Manna, a resident of Nandakumarpur in South 24 Parganas. She formed a Self Help Group with 12 women in her village in 2001 with Sabuj Sangha's support. Rina is an active member of both her SHG and the Sunderbans Women's Development Society.

He, in turn, helped six of his farmer friends to initiate vermi-composting by lending worms. He understands that increasing production of vermi-composting and selling at a reasonable rate to other farmers will help reduce local dependence on inorganic/chemical fertilizers and promote sustainable farming practices. Accordingly, he is planning to build a bigger pit with support from the Block Agriculture Development Officer. "I would like to learn more in future," says Dinesh.

Impacting Lives

Saraswati Dolui, resident of Narendrapur village in Mathurapur II block in South 24 Parganas, has emerged as a dynamic representative of the SHG movement. This journey began in 2001 when she persuaded 12 of her peers to come together and form a SHG in her village. It wasn't easy. But her involvement in rural development activities for the past six years had strengthened her resolve. She had become associated with Sabuj Sangha in 1995. Saraswati had been unable to continue her education beyond the higher secondary level due to poverty. But she had retained her interest in new experiences and knowledge.



Saraswati became the group leader, conducting regular meetings and maintaining administrative and financial records. She also ensured that the women in the group shared and learnt from each other on critical issues like health and nutrition and their children's education. For her, the involvement in the Sunderbans Women's Development Society has been particularly enjoyable and enriching with possibilities of contributing to both financial and social development. Her duties include conducting regular meetings with members of 20 SHGs. She also maintains records of loans, calculates due interest and follows up with defaulters for recovery. Saraswati wants to support other women by being an active and effective member of the Sunderbans Women's Development Society herself.

Social Security for Senior Citizens: An Urgent Imperative

Eighty five year old Guno Sindhu Mondal and his sixty five year old wife Shibani are no longer able to earn their livelihood and have been left to fend for themselves by their children. The elderly couple has no source of income and barely manages to survive on their depleting resources. Mounting expenses due to age related illnesses have added to their woes. They receive Rs 400 monthly through an old age pension scheme initiated by Sabuj Sangha to help the elderly who do not receive any government pension or support from their families. For the couple, this provides some relief.



For Sabuj Sangha, the growing engagement with local communities in the Sundarbans has also helped highlight the plight of the elderly.

Many are unable to work. They are neglected or abandoned by their children and left to fend for themselves without a support system. Sabuj Sangha's old age pension scheme currently supports 57 such elderly men and women. However, it is apparent that a lot more needs to be done. Sabuj Sangha is keen to build its own understanding, mobilise resources and enhance interventions that support this critical age group.



ENVIRONMENT AND DISASTER RISK REDUCTION

Environment and Disaster Risk Reduction represent a growing area of engagement for Sabuj Sangha. This is driven particularly by its close association with parts of the Sundarbans which lie within South 24 Parganas. One of the largest mangroves in the world, Sundarbans constitutes a unique and complex ecosystem. The area has been facing vagaries of nature, loss of land due to submergence and erosion, rising sea levels, delayed monsoons and increase in rainfall. Supporting local communities to adapt and survive in this fragile environment impacted by climate change through comprehensive initiatives including sustainable livelihoods has become a crucial concern for the organisation. Promoting rainwater harvesting and use of renewable energy have also become key areas of work. Meanwhile, initial relief and rehabilitation efforts for specific disaster events such as floods and cyclones are gradually assuming the shape of a more holistic Disaster Risk Reduction approach. Further, environment and DRR considerations are being inbuilt in all the other thematics as well to ensure integrated and sustainable development.

The **priority themes** are:

- Generating awareness on biodiversity management disaster risks and climate change effects among local communities and other key stakeholders

Sites

Select areas in Mathurapur I and II, Sagar and Pathar Pratima blocks in **South 24 Parganas** and Kumargram block in **Jalpaiguri**

Programmes and Partners

Livelihood Development at Sagar Island

- Ministry of Environment(Gol), GoWB, via World Bank
- Institute of Environmental Studies and Wetland Management (ICZMP)

Biodiversity Management

- West Bengal Biodiversity Board (Department of Environment, GoWB)

Solar Medicus

- Hanseatic India Foundation

Renewable Energy at CDC

- Garden Reach Shipbuilders and Engineers Ltd.

- Developing comprehensive DRR initiatives in collaboration with local communities
- Providing relief and rehabilitation support in the case of disaster events
- Strengthening vulnerable coastal communities to access their rights and entitlements
- Bolstering livelihood opportunities encompassing both land and non-land based occupations
- Strengthening drinking water, sanitation and drainage systems as well as road connectivity in the area
- Contributing to knowledge building on DRR and climate change through research, documentation and technology focused efforts

Key Strategies

Community Mobilisation and Capacity Building to create a local pool of trained personnel equipped for early warning, search and rescue, first aid, temporary shelter construction and coordination actions; also developing capacities for enhancing sustainable livelihoods and accessing welfare schemes

Community based Disaster Management Planning including hazard, vulnerabilities and capacity assessments and developing Village Disaster Management Plans

Infrastructural Support in terms of building disaster resistant cyclone shelters and immediate construction support post disasters; also supporting essential systems linked to WASH

Linkages between communities, local self government bodies, government line departments and other relevant stakeholders including academic institutions for coordinated actions for DRR and climate change

Snapshots

Integrated Approach to Environment, DRR and Livelihoods

Despite their ecological richness, coastal areas have not received adequate protection with indiscriminate use of natural resources. The Sagarisland in the Sundarbans has been identified by ICZMP as being particularly vulnerable. Sabuj Sangha is one of the implementation partners of ICZMP undertaking activities in Dhaspara Sumatinagar II GP in Sagar. The emphasis has been on promoting sustainable, adaptive farming measures which meet local contexts. This includes SRI and organic farming to retain soil fertility, changing crop types and adjusting timing of cropping, using organic fertilizers (vermicompost and bio-pesticides) to preserve soil nutrients, rain water harvesting, ground water recharging and PBIF. Local trades are being promoted as well. The underlying emphasis has been on judicious use of natural resources with efforts for replenishing the same as far as possible. Further, a proposed Resource Centre on handicrafts at the GP or block level for skill development and marketing will be built using disaster resistant technologies.

Also, the next phase of activities include supporting 150 groups on disaster preparedness and DRR at the household level, recognising and addressing impacts of climate change as well as other sectoral initiatives such as preventive health care. The inputs will be drawn from past experience of community level capacity building undertaken in Brajoballavpur GP in Patharpratima block in South 24 Parganas. Here, hazard, vulnerability and risk assessment, formation of a Task Force, preparation of village based disaster management plans, construction of shelters and developing Early Warning Message Systems had been undertaken.



Footprint

- 63 GP and 2 block level meetings held with PRI members on environmental issues, climate change and disaster risks
- 246 SHG group leaders provided inputs on impacts of climate change and role of sustainable livelihoods in preserving ecological balance
- Maintenance activities for four disaster resistant cyclone shelters built earlier undertaken by community task forces
- Growing emphasis on environment and DRR considerations within other thematics with the organisational team also learning in the process
- A multistakeholder Block Biodiversity Committee constituted at Mathurapur II in South 24 Parganas





Promoting Renewable Energy

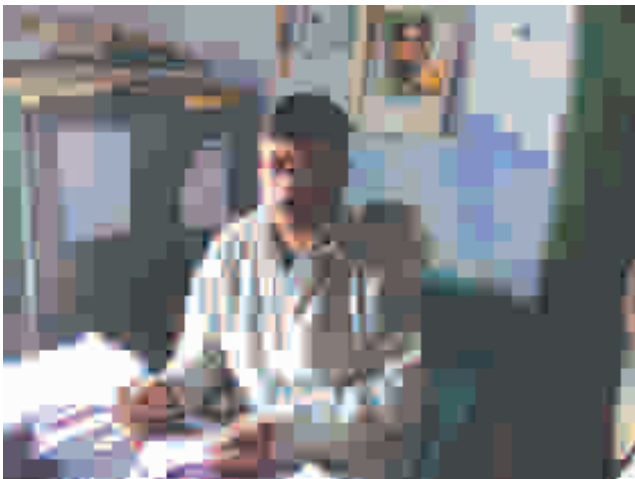
The Outreach Resource Centre in HerembagopalpurGP in Pathar Pratima in South 24 Parganas, where a Community Delivery Centre is also located, is fully dependent on alternate energy sources since there is no electricity in the area. Under the supervision of the Garden Reach Shipbuilders and Engineers Limited (GRSE), 12 solar panels have been installed in the campus spanning an area of 1 acre (43200 sq. ft). The solar energy that is harnessed is used in electrification at the CDC. Six LED light posts have also been installed to illuminate the campus. Additionally, the solar energy is utilised in operating solar fans in the doctor's chamber. The Solar Medicus project in RHTC also incorporates the use of renewable energy solutions in providing healthcare services (See page no. 7).



Learning More about Climate Change

During March 2011 a research study on '**Tidal Variations in the Sundarbans Estuarine System, India**' was undertaken with Sabuj Sangha as the field implementation partner and published in August, 2013. The study was anchored by premier institutions such as the National Institute of Oceanography (Jadavpur University), CSIR National Institute of Oceanography (Goa), and Basanti Devi College (Calcutta University). The research was a part of the Sunderbans Estuarine Programme (SEP) wherein 30 observation stations over an area of about 3600 sq km were utilised for measuring tidal water levels, salinity, water and air temperatures. The study, possibly the first of its kind for the Sundarbans, yielded rich data particularly in terms of tidal range and amplification and high water stands at specific points.

Experiencing Positive Change



"Ghoramara GP's population of 6000 people is constantly exposed to loss of life, land and livelihood due to floods and tidal waves. Through Sabuj Sangha's awareness campaigns and activities, I learnt about global warming as the cause of environmental degradation and the urgency to restore the ecological balance. I hope that the organisation will further help us in eco plantation and protection of the coastline to prevent further damage and reduce the risks to families," shares Sanjib Sagar, Panchayat Pradhan-Ghoramara Gram Panchayat in Sagar.



"Since 2011, Sabuj Sangha has been working hard towards creating nirmal graams... They have been successful in strengthening SHG groups to conduct livelihood activities within a short time which we (the Panchayat) have been unable to achieve so far," acknowledges Bipin Parua, Panchayat Pradhan- Dhaspara Sumatinagar in Sagar.



VOLUNTEER SUPPORT

Sabuj Sangha traces its genesis to the spirit of Volunteerism which continues to shape its activities. Each year, supporters from India and overseas help the organisation grow by providing technical inputs, financial contribution, research and documentation and other project based assistance.

SUAS Educational Development, Ireland

SUAS and Sabuj Sangha have a mutually enriching partnership with annual placement of volunteers. The volunteers help in organising fun days, sports and music camps, hygiene workshops and other activities at the project locations. They are also involved in office-based projects such as developing databases or designing promotional materials. During 2013-2104, the following volunteers from SUAS and Germany worked at KSSN (Residential Child Labour School) in South 24 Parganas and the Residential Child Labour School in suburban Kolkata.

Aidan Power
David Byrne
Katie Fallon
Dylan Westphal

Clare Hanley
Alias Gallagher
Lydia McCarthy
Paula McDonald

Daniel Moloney
Cian Quinn
John Close
Claire O'Rourke

Rebecca French
Shauna Hussey
Michael Holland
Roisin Horgan

Kate Doyle
Aisling Byrne
Rory O'Brien
Tara Keogh

Volunteers from Germany

Enya Wutzke
Sanka Mukherjee

Janina Nandy

Meike Bruhn

Carla Terhechte

Lina Heeren

Indian Volunteers

The thematic areas also benefitted from inputs provided by Indian volunteers such as Mousumi Chetia and Akhil Veetil. While Mousumi was involved in Livelihood and Women's Empowerment related activities, Akhil undertook a brief comparative study of a government primary school and KSSN to capture their utilisation of child and social psychology insights in the educational process.



MAKING A DIFFERENCE

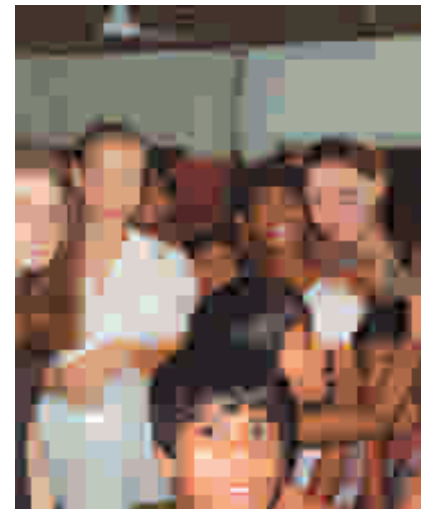
Meike Bruhn, a teenager from Hemsbünde, Germany just wanted to get away for a while but seven months in India left their mark on her. Friends from Hamburg introduced her to the Hanseatic India Forum (HIF) which supports Sabuj Sangha. Last September, she and her friends came to India and worked for six months with Sabuj Sangha in a village south of Kolkata. It was Bruhn's job to teach the children in the school in English. "At least that's what we tried to do. But it was difficult because they hardly spoke any English, and we had no knowledge of their language. However, after we learned reasonably good Bengali, it worked better."

Bruhn also became a substitute mother for the five- to thirteen-year-old children, many of whom now live far from their families. "The lessons lasted until 4 pm. In the afternoon, the students played mostly soccer. We also had many cans of soapy water for blowing bubbles and a guitar to entertain them." explains Bruhn. Her curiosity spread to Bruhn's mother, who planned to visit India with the HIF this year. Once here, she will visit the school where her daughter lived. Remembering the cold winter months and the poorly insulated houses where she lived, Bruhn has collected donations of socks for the children to keep them warm. Clearly, Sabuj Sangha has meant new friendships and bonding across countries and ages for both Bruhn and the children.

(Adapted from an article by Von Stephan Voigt in 'Landkreis Rotenburg', October 1, 2014.)



Sabuj Sangha welcomes volunteers. Every effort, big or small, matters to us! So if you are passionately interested in bringing about social change, come and join us. For easy reference, a Volunteer Information Pack is available at our website.



Experiencing Positive Change

"Making in depth observations was difficult in such a short period of time, however, it has been a massive learning experience that has changed the way I as a researcher, a teacher as well as a student and a human being perceive the world around me," shares Akhil Veetil in his study report.

"I was simply bowled over by the kind-hearted people I came across during the course of my work in Nandakumarpur in South 24-Parganas district," says Dhruv Narang, who participated in the organisation's activities for a short while. The desire to do something for rural people inspired him to change his plans of doing an MA in Psychology and opt for a course in Rural Management. "Working in rural areas posed a unique challenge. Also, you get a lot of satisfaction from making a difference to the lives of the underprivileged," adds Narang.

"Knowing that teaching in Ghutiari Sharif everyday encourages children to come to school increased my determination to ensure that this placement was as successful as it could be. I genuinely don't think that I will experience a summer so challenging yet rewarding as spending time volunteering overseas with Sabuj Sangha," shares SUAS volunteer David Byrne. Thanking the team for an amazing experience, he says that the organisation's work motivates him to continue exploring his interest in global development.

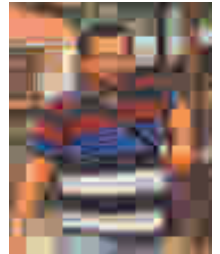


VISITOR SPEAK

Sabuj Sangha received many visitors from India and other countries who contributed towards its growth in the past year. Their shared feelings and experiences help to guide, encourage and support us in our work.

"I was fortunate to have come across Sabuj Sangha during my India trip in 2014. On their invitation, I then visited some of their campuses in Sunderbans area. What I have seen there is mind-boggling! Over the past three decades, this non-profit non-governmental organisation has done outstanding work in a broad range of areas including health, education, agriculture, financial well-being of villagers, empowerment of women, and providing a better tomorrow to the children in need. Many international organisations have recognized their effort and extended help in different forms; however, still there is a long way to go to be where they want to be. I wish them luck in this challenging but yet divine journey, and I intend myself to be a part of it."

– Supriya Guha, Australia

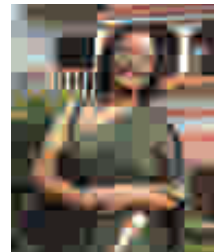


*"I know Sabuj Sangha from two perspectives - as member of the German **Hanseatic India Forum (HIF)** for the Solar Medicus Charity project and as the father of 18 yr old Janina who volunteered at a Sabuj Sangha School in Nandakumarpur. It is a remarkable organisation with highly motivated, professional and hard working people who are also very friendly and warm with their guests. I wish Sabuj Sangha all the best in their efforts towards a better quality of life for those who live in underdeveloped areas of Sundarbans."*

– Dr. Andreas Nandy, Director of Molecular Allergology at Merck, Business unit Allergy (Allergopharma), Germany

"This was my very first visit to Sundarban & Sabuj Sangha. I had heard so much about it and now with my eyes saw what Mr. Ansuman Das & his team are doing for the destitute children picked up from the street / railway platform. These kids are so prone to trafficking and all other sorts of crime, which makes one nervous. I am truly moved by the dreams of Sabuj Sangha in various fields, from agriculture to medical help. We saw it with our own eyes, how and what they are doing step by step, slow but steady. We wish them all the best for this noble cause."

– Mrs. Gouri Mukherjee, Germany



"It has been a pleasure to work together for the last two years with Sabuj Sangha, an NGO active in a wide range of noble social activities ranging from community development, to helping the farmers, Empowerment of women, child protection, as well as providing medical help to the community. Sabuj Sangha is known for their honest and transparent management of project which makes it strongly attractive to support their work."

– Dr. Amal Mukhopadhyay, Founder Director, **Hanseatic India Forum**

FINANCIALS

SABUJ SANGHA

Vill & P.O- Nandakumarpur, Dist - South 24 Parganas, Pin-743349

Balance Sheet (Foreign Contribution & Non Foreign Contribution) of Sabuj Sangha as at 31st March, 2014

LIABILITIES:	Amount (₹)	Amount (₹)	ASSETS:	Amount (₹)	Amount (₹)
Non Current Liabilities			Non Current Assets		
Unrestricted (General) Fund	12,599,863		Fixed Assets	18,709,557	
Other Funds	<u>663,157</u>	13,263,020	Investments	<u>549,110</u>	19,258,667
			Current Assets		
Current Liabilities			Advances	2,797,061	
Restricted (Project) Fund	1,341,646		Grant Receivable	3,591,895	
Advances	8,146,702		Others	<u>35,710</u>	6,424,666
Liabilities & Provisions	<u>3,826,113</u>	13,314,461	Cash & Bank :		
			Cash in hand	98,290	
			Bank Balances	<u>795,858</u>	894,148
TOTAL:		26,577,481	TOTAL:		26,577,481

SABUJ SANGHA

Vill & P.O- Nandakumarpur, Dist - South 24 Parganas, Pin-743349
Income & Expenditure Account- (Foreign Contribution & Non Foreign Contribution) Section of Sabuj Sangha for the year from 1st April, 2013 to 31st March, 2014

INCOME:	Amount (₹)	Amount (₹)
Grant Utilized for Project Revenue Expenses		
Foreign Contribution	8,794,780	
Non Foreign Contribution	<u>12,798,081</u>	21,592,861
General Income		
Bank Interest	106,847	
Donation	1,712,404	
Administrative	725,442	
Other Income	<u>6,907,141</u>	9,451,834
Income of General Health		2,081,550
Deficit of Income over Expenditure transferred to Unrestricted (General) Fund		3,403,928
TOTAL INCOME		36,530,173
EXPENDITURE : (Thematic Wise)		
FC Projects:		
Health & Nutrition	9,769	
Water, Sanitation & Hygiene	4,088,821	
Education & Protection	3,871,702	
Livelihood & Women's Empowerment	826,848	
Environment & Disaster Response	39,268	
General	<u>1,444,568</u>	10,280,976
NFC Projects:		
Health & Nutrition	6,674,082	
Water, Sanitation & Hygiene	3,516,408	
Education & Protection	6,544,875	
Livelihood & Women's Empowerment	3,537,758	
General	<u>3,939,429</u>	24,212,552
Depreciation on Assets		2,036,645
TOTAL EXPENDITURE		36,530,173

SABUJ SANGHA

Vill & P.O- Nandakumarpur, Dist - South 24 Parganas, Pin-743349
Consolidated Receipts & Payments Account (Foreign Contribution & Non Foreign Contribution) Section of Sabuj Sangha for the year from 1st April, 2013 to 31st March, 2014

RECEIPTS:	Amount (₹)	Amount (₹)
Opening Balance :		
Cash in hand	112,245	
Cash at Bank :	<u>2,905,988</u>	3,018,233
Advances		3,197,969
Grant For Projects:		
Foreign Contribution	7,290,071	
Non Foreign Contribution	<u>10,333,153</u>	17,623,224
General Receipts		
Bank Interest	106,847	
Donation	1,712,404	
Administrative	725,442	
Other	<u>7,918,713</u>	10,463,406
Donation to Corpus Fund		11,281
Receipts of General Health Project		2,080,790
TOTAL RECEIPTS		36,394,903
PAYMENTS : (Thematic Wise)		
FC Projects:		
Health & Nutrition	9,769	
Water, Sanitation & Hygiene	4,089,486	
Education & Protection	3,189,010	
Livelihood & Women's Empowerment	927,295	
Environment & Disaster Response	14,279	
General	<u>1,474,408</u>	9,704,247
NFC Projects:		
Health & Nutrition	6,742,875	
Water, Sanitation & Hygiene	3,516,408	
Education & Protection	6,199,361	
Livelihood & Women's Empowerment	3,896,561	
General	<u>3,932,684</u>	24,287,889
Advances		1,508,619
Closing Balances :		
Cash in hand	98,290	
Bank Balances :	<u>795,858</u>	894,148
TOTAL PAYMENTS		36,394,903

Signed in terms of our report of even date

for DAS DIPAK & CO.
Chartered Accountants

(Dipak Das)
Proprietor

Membership No. - 054450

Date : 7th September 2014
Place : 82 Ultadanga Main Road, Kol-67



for SABUJ SANGHA

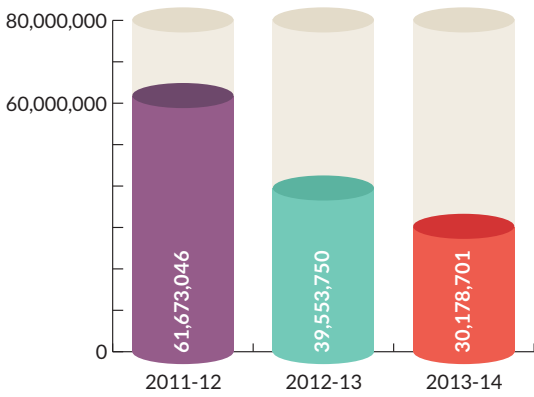
Ansuman Das
Secretary & Director

Sibasankar Giri
President

Bhabesh Chandra Mondal
Treasurer

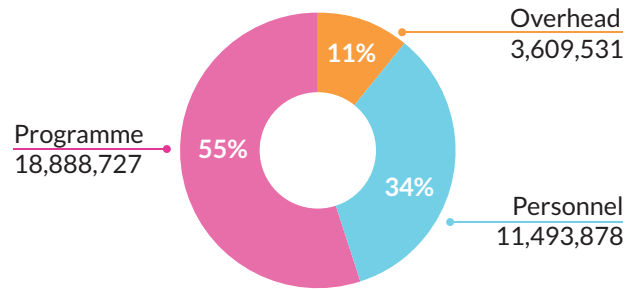
OTHER FINANCIAL HIGHLIGHTS

Comparative Annual Turnover

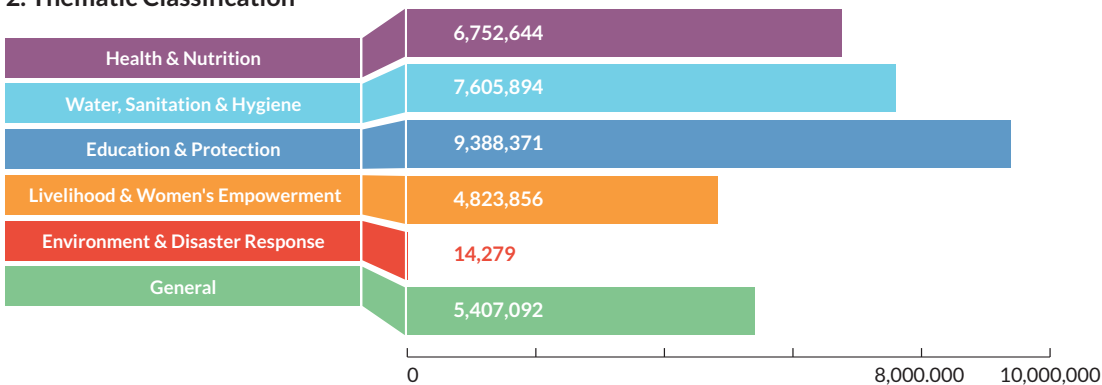


Overviews of Disbursements 2013-14

1. Overall Classification

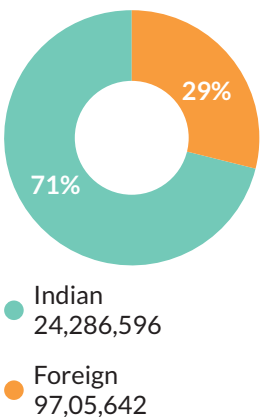


2. Thematic Classification

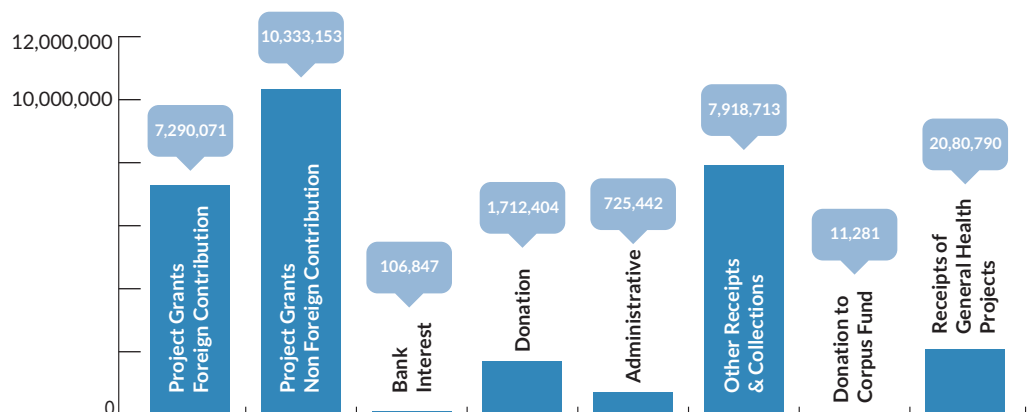


Overview of Receipts 2013-14

1. Composition India Vs. Foreign



2. Source Classification





ON THE ANVIL

Sabuj Sangha's Strategic Plan 2012-2017 provides the framework for envisioning future programme priorities as well as areas of organisational development. This includes strengthening existing programmes to enhance efficiency and effectiveness and to ensure that rights based, participatory and empowering approaches are embedded in them. At the same time, strengthening internal dialogue, governance, human resource and financial management systems have been prioritised.

Specific programmatic aspects linked to contextual needs that have been identified for a deeper engagement in the coming years are outlined below. Also, adolescent girls and the elderly have been identified as particularly vulnerable groups that need greater attention and investment.

- Enhance focus on the girl child with programmes that address child protection issues particularly trafficking in South 24 Parganas and Jalpaiguri
- Grow from maternal and child health and nutrition to more holistic reproductive and child health and nutrition based interventions with greater focus on sexual and reproductive rights and adolescent girls
- Focus more on health of urban deprived populations in Kolkata including models of subsidised health care support
- At the RHTC, strengthen the eye care unit with a fully equipped Operation Theatre; enhance orthopaedic, dental and complete geriatric care services
- Contribute to a pool of teachers skilled in child centred learning methodologies in the state through Primary Teacher Training Institute and B Ed College
- Enhance skill development and vocational training opportunities for the rural youth
- Mobilise youth for greater participation in local development processes
- Support women SHGs in leveraging their collective strength through a federation and also developing strategic business plans for sustainability
- Develop greater understanding and shape interventions for social security of senior citizens
- Build internal capacities to identify and contribute to climate change adaptation measures

Sabuj B. Ed. College, affiliated to the National Council for Teacher Education and the University of Calcutta, has been planned as a quality, teaching institute located in Nandakumarpur, South 24 Parganas. To be initiated in July 2014, the co-educational college will offer a conducive learning environment driven by experienced faculty members and supported by requisite facilities. Residential facilities are also being provided. Sabuj Sangha is keen to ensure that it grows into a vibrant institution.

Also, the organisation intends to strengthen Management Information System (MIS), research and documentation processes across all the initiatives. This is seen as a critical requirement. Networking and advocacy initiatives will also be prioritised to contribute to policy level dialogues in the state and national agenda, particularly for issues such as climate change and sustainable development in the Sundarbans.

APPEAL TO DONORS

Empower today, for a better tomorrow!

Join us today and support the sustainable development of marginalised rural communities across West Bengal. With the funding received from our donors, we are able to tackle poverty head on and provide communities with the tools necessary to create new livelihood opportunities for themselves.

Help us to continue to deliver this assistance and change the reality of life in these communities where:

- ✓ Almost one in every two people live below the poverty line
- ✓ Over half of all households do not have access to clean drinking water
- ✓ Only half of all births are attended by a qualified healthcare professional; and,
- ✓ Access to quality basic education and adequate physical infrastructure remains out of the reach of the majority.

Donate today and help us secure positive change through the provision of healthcare, education, child protection services, water and sanitation facilities, livelihood opportunities, and disaster response initiatives.

***Let's build a better tomorrow.
Together, anything is possible!***

Donation

I would like to donate:

₹ 500 ₹ 1,000 ₹ 5,000 ₹ 10,000 ₹ 25,000 Other: ₹ _____

Payment Details

Cheque made payable to: "Sabuj Sangha"
Address: Sabuj Sangha,
30/9 Rajdanga Main Road (East),
Narkel Bagan, Kolkata 700107,
West Bengal

Donor Details

Title: _____ First Name: _____ Last Name: _____

Address: _____

Postal Code: _____ State: _____ Country: _____

Phone: _____ Email: _____ PAN: _____

Date: _____ Signature: _____

All donations are exempt under U/S 80G Income Tax Act & 12A of Income Tax Act. 1961

What your donation can do:

Support a mother for her healthy child	₹ 3,500	\$ 57	€ 46	£ 36
Construct a household latrine for one family	₹ 6,500	\$ 107	€ 86	£ 67
Support one prep centre teachers' salary for a month	₹ 3,000	\$ 50	€ 39	£ 30
Support one child's residential education costs for a year	₹ 18,000	\$ 295	€ 237	£ 186
Provide livelihood support one family	₹ 10,000	\$ 164	€ 132	£ 103
Sponsor a Old age person for provide Food & Medicine one year	₹ 9,600	\$ 157	€ 126	£ 99
Support one health camp for u reached area	₹ 5,000	\$ 82	€ 66	£ 52
Support one month running cost for one coaching Centre	₹ 5,500	\$ 90	€ 72	£ 57
Support a old age person for eye surgery	₹ 5,000	\$ 82	€ 66	£ 52
Provide One day Exposer for 200 children	₹ 35000	\$ 574	€ 461	£ 361



For donation queries,
or
to partner with
Sabuj Sangha,
contact:

Arunabha Das
+919007032300
arunabha@sabujsangha.org



**THANK YOU
FOR YOUR
SUPPORT**

REGISTRATION AND EMPANELMENT

West Bengal Societies Registration Act 1961
Registration Number: S/16979 of 1975-1976

Foreign Contribution (Regulation) Act 1976
Registration Number: 147110293

Section 12A Income Tax Act 1961
Order Number: DIT(E)/S-80 8E/225/97-98

Section U/S 80G(5)(VI) of the Income Tax Act, 1961 (Perpetual)
Order Number: DIT (E)/2022 8E/225/97-98

Accredited by the Credibility Alliance
Registration No: CA/62/2010-11

Register under Person with Disabilities Act 1995
Registration No: 409 (Com)

Empanelled with Planning Commission, Government of India
Unique Id: WB/2009/0000717

Empanelled with West Bengal State AIDS Prevention and Control Society

Empanelled with National CSR Hub
Ref HUB Code: A/1/12/08/066

Permanent Account Number (PAN)
AACT58436Q

Tax Deduction Account Number (TAN)
CAL516506A

Our Bankers

Standard Chartered Bank

Axis Bank Ltd

State Bank of India

Bank of India

United Bank of India

The West Bengal State
Co-Operative Bank Ltd

Account Details

NFC Bank Account

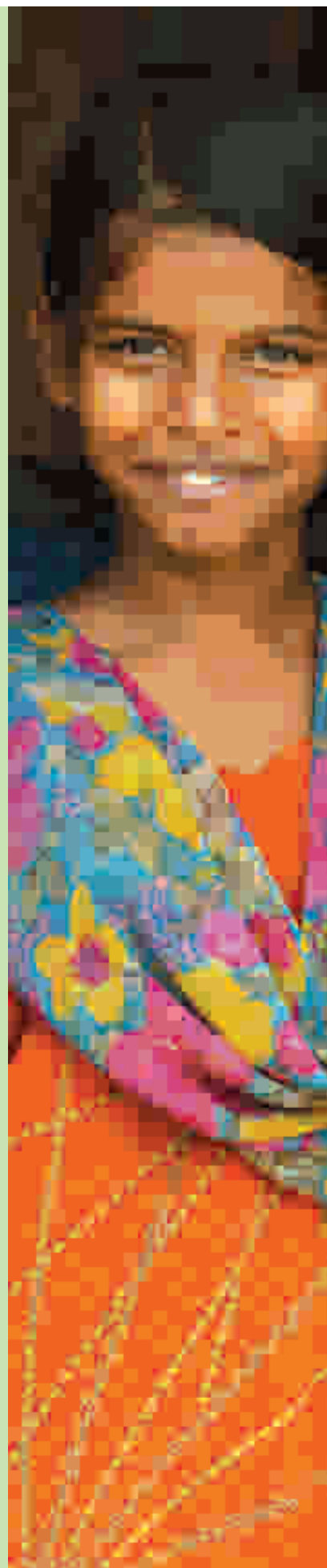
Standard Chartered Bank Kolkata
Account Number: 32111012949
SWIFT Code: SCBLINBBXXX
IFSC CODE: SCBL0036087

FC Bank Account

Standard Chartered Bank Kolkata
Account Number: 32111012930
SWIFT Code: SCBLINBBXXX
IFSC CODE: SCBL0036087

Auditor

Das Dipak & Co
82, Ultadanga Main Road
Kolkata 700067





SABUJ SANGHA



Our vision is to secure a society where all people enjoy equal rights and access to equal opportunities

The team in our Kolkata office looks forward to helping direct all your communications and queries:

Sabuj Sangha
30/9 Rajdanga Main Road (East)
Kolkata 700 107
West Bengal
Phone: +91 033 2441-4357/ 3296-4618

Email: info@sabujsangha.org, director@sabujsangha.org
Website: www.sabujsangha.org

Keep updated with the latest news of our activities by:



Liking us on Facebook



Connecting with us on LinkedIn



Visiting our channel in YouTube

Our registered office:

Sabuj Sangha
Village & P.O.: Nandakumarpur, P.S. Raidighi
District: South 24 Parganas
Pin: 743349, West Bengal

Our Project Office:

“Aalor Disha” –Peri -Urban Unit
Village & P.O.: Champahati
P.S.: Baruipur, District: South 24 Parganas
Pin: 743330, West Bengal
Phone No.: +91 03218261143/44

Jalpaiguri Project Office:

H/O: Mr. Bimal Sarker
Netaji Road, Loharpole
Alipur Duar, Jalpaiguri
Pin: 736121, West Bengal
Phone No.: +91 8348587501

Sagar Island Project Office:

Village & P.O.: Rudranagar
P.S.: Sagar
District: South 24 Parganas
Pin: 734473, West Bengal
Phone No.: +91 9563098878

Patharpratima Project Office:

Village & P.O.: Herambagopalpur
P.S.: Patharpratima
District: South 24 Parganas
Pin: 734483, West Bengal
Phone No.: +91 9733578369/03174-214309

